

Sustainable Urban Futures

Swedish experiences and future challenges

PhD Jessica Algehed

Chalmers University of Technology
and
Mistra Urban Futures

Gothenburg, Sweden




- Kisumu, Cape Town, Gothenburg and Manchester
- Started 2010
- Co creation
- Core funded by Mistra, SIDA and local partners
- 40 projects
- 150 publications
- www.mistraurbanfutures.com



Urbanisation in Sweden

- 85 % of Sweden's population live in cities
- Towns with less than 20 000 inhabitants shrink
- Income levels, degree of education and employment rates are in general lower in rural areas



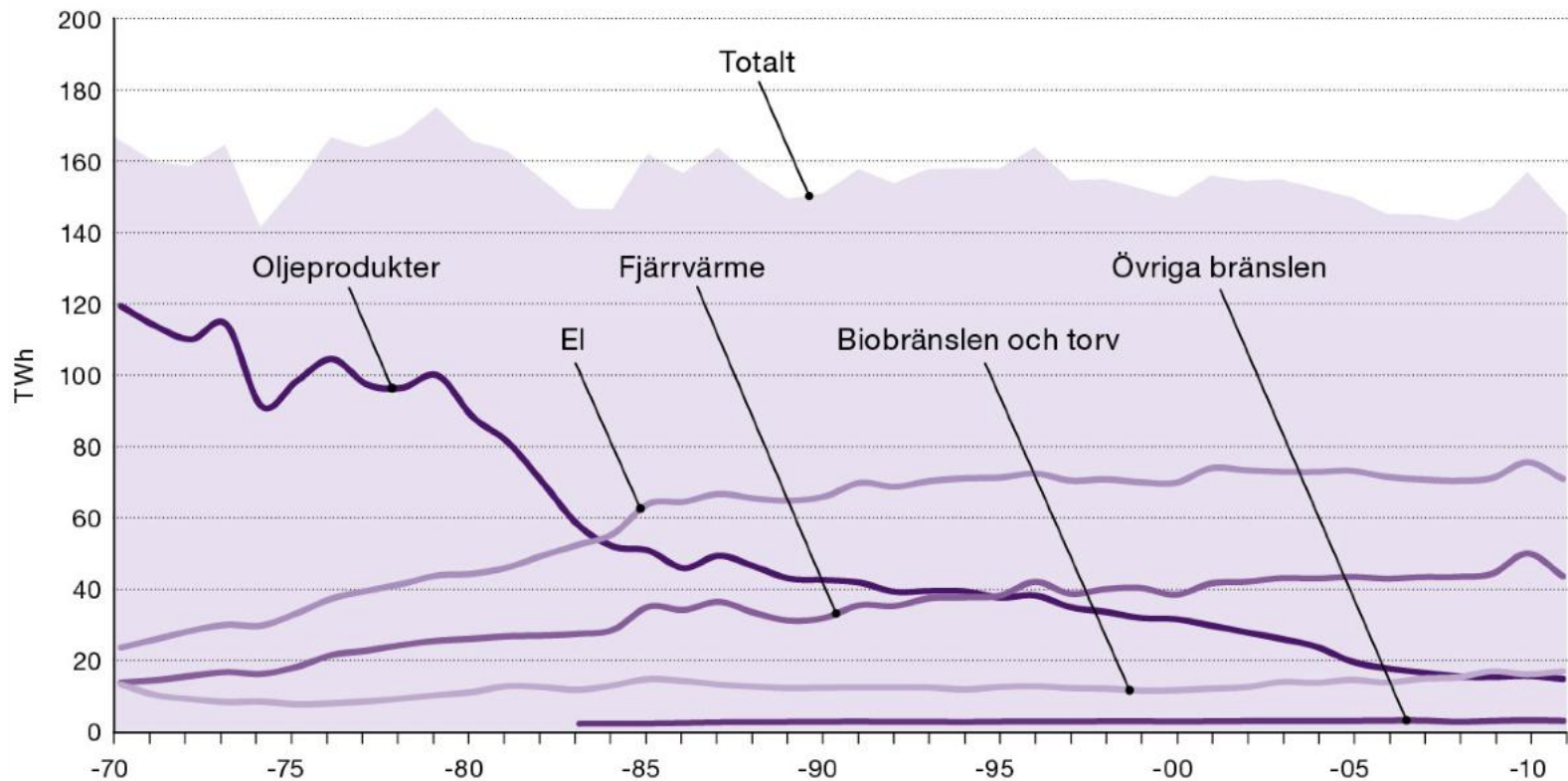
- 
- Segregation and increased economic gaps
 - Adaptation to the global economy, attractiveness and competitiveness
 - Climate mitigation and in efficient use of of natural/ecological resources
 - How to adapt to climate change

Main Urban Challenges in Sweden

Swedish cities become
more and more sustainable from an
environmental perspective. Measures have
required no or only little lifestyle changes.

Domestic heating is carbon neutral...

Figur 2 Energianvändning i bostads- och servicesektorn 1970–2011, TWh



New houses use little energy...



Lindås, Sweden's first passive house

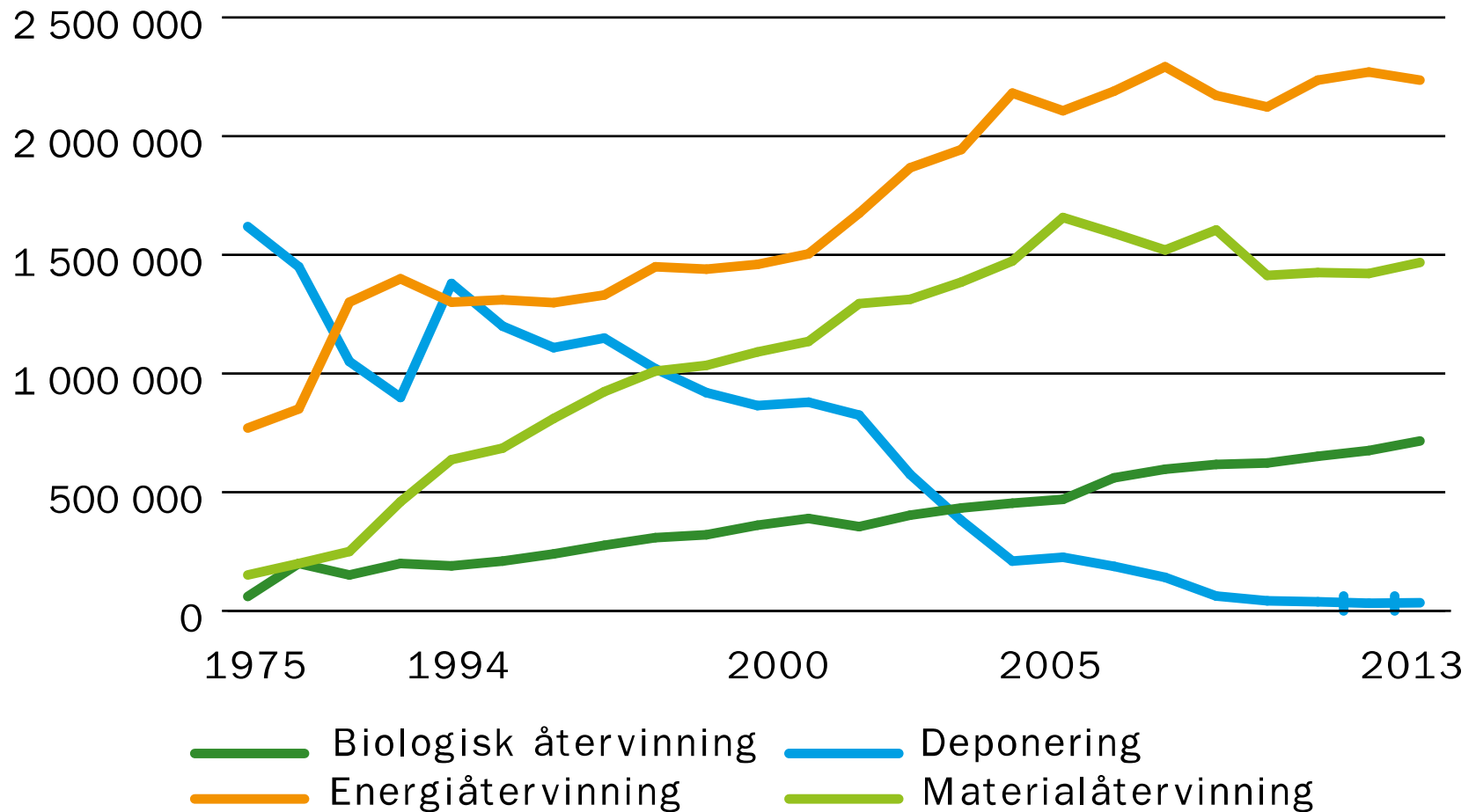


Växjö, Low carbon house with wood frames

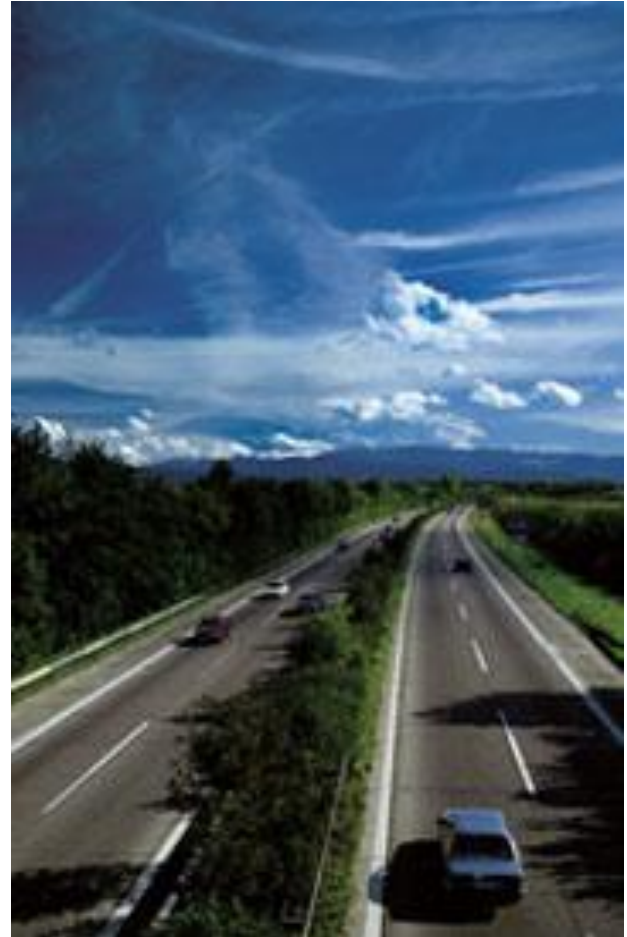


Hamnhuset, Sweden's first multi dwelling passive house

No waste is sent to landfill...



Cars and buses run on biofuels...



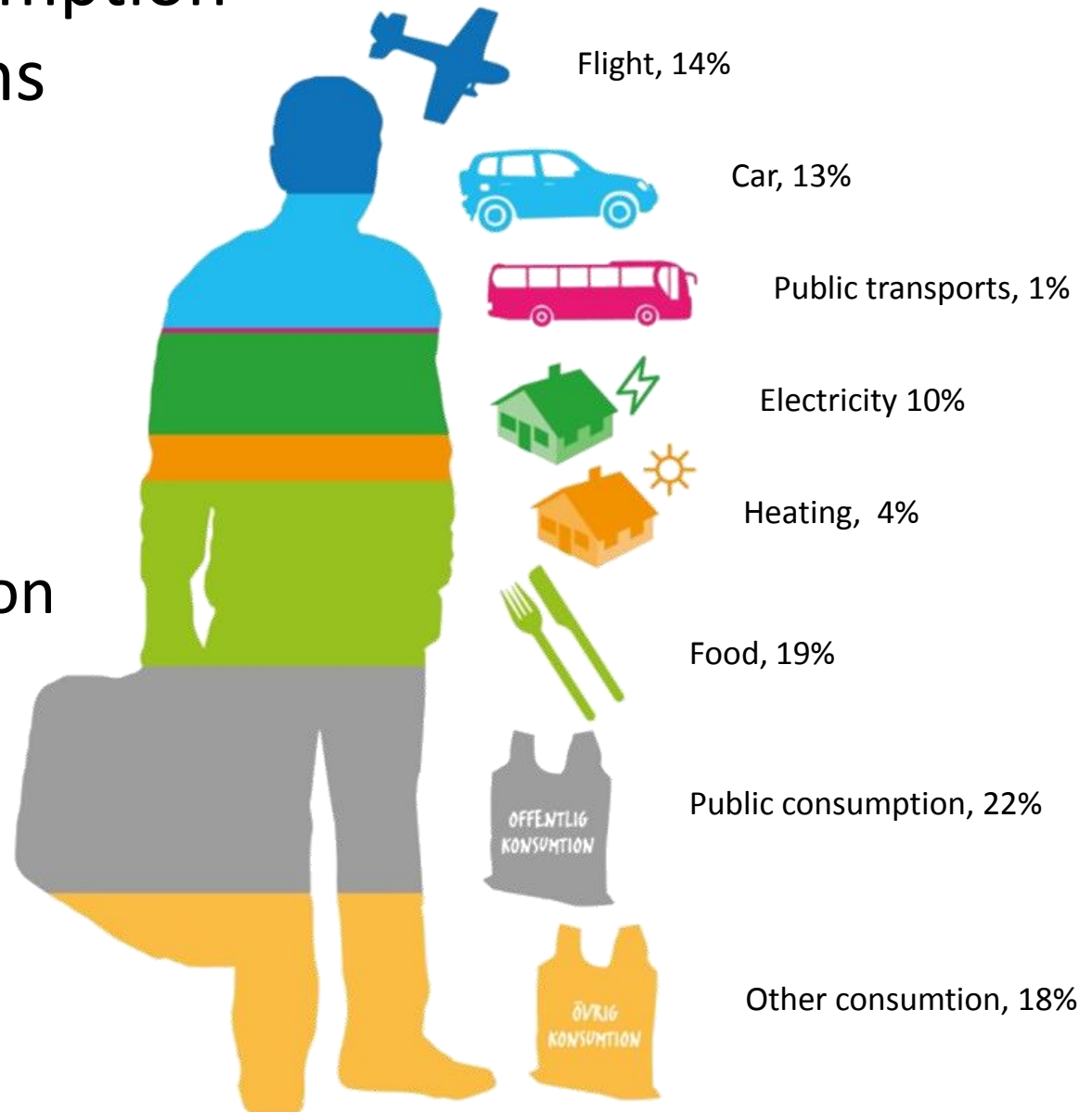
Unfortunately,
our efforts are not enough...



Issac Cordal, Berlin, "Politicians discussing global warming"

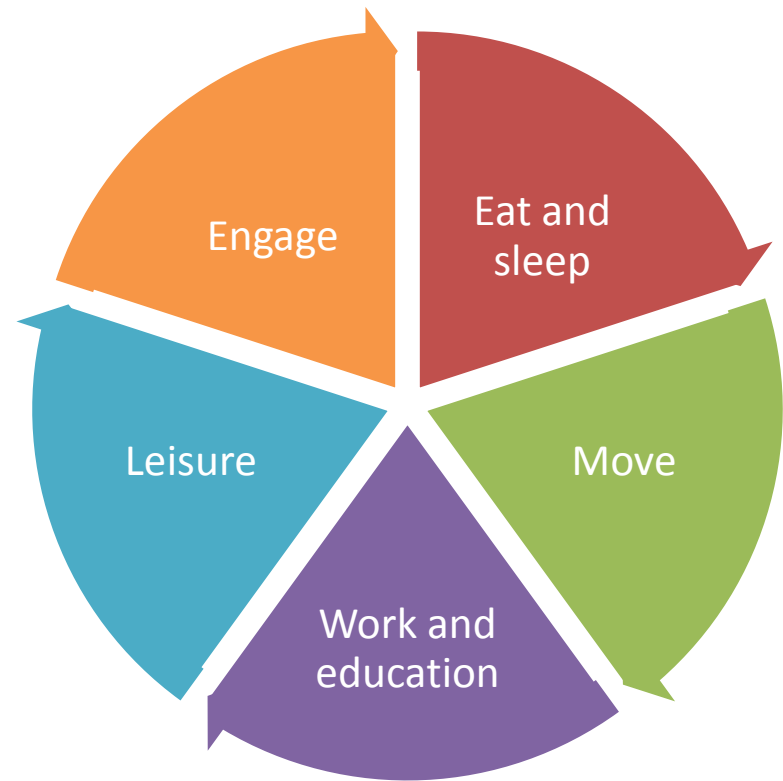
Average Consumption Based Emissions in Gothenburg

7,8
tonnes CO₂/person

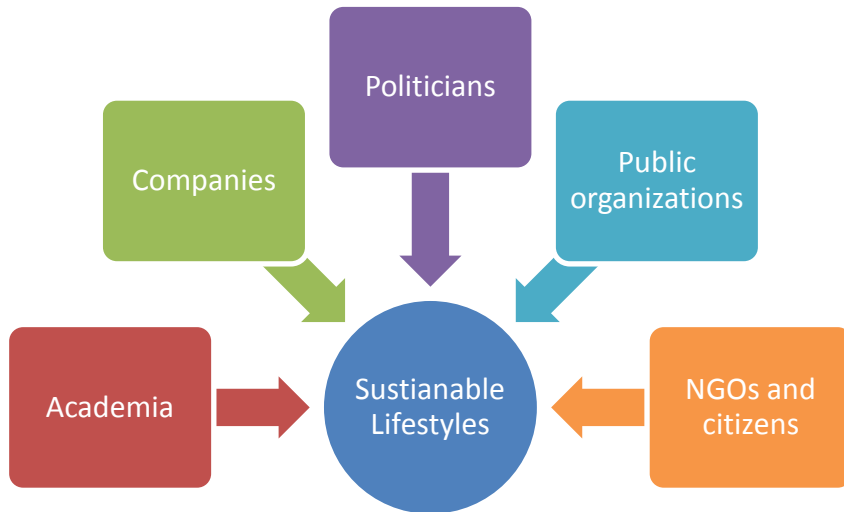


Critical questions for consumption based climate strategies

1. What kind of behaviours and lifestyles are sustainable?
2. How do we measure environmental/climate impact on individual levels?
3. What are the positive effects of sustainable lifestyles, like well being and health?
4. How do we make sustainable lifestyles easy? And how do we make unsustainable lifestyles hard/expensive/not socially accepted?



A strong local tool box in Sweden



- Urban planning
- Local rules and fees (parking norms, congestion fees)
- Large land owners – local terms of reference on developers
- Public transport operators
- Waste management operators
- Public procurement
- Research and innovation
- Education and information campaigns
- Support to local NGOs